

GD26 Die Cast Snap Catch

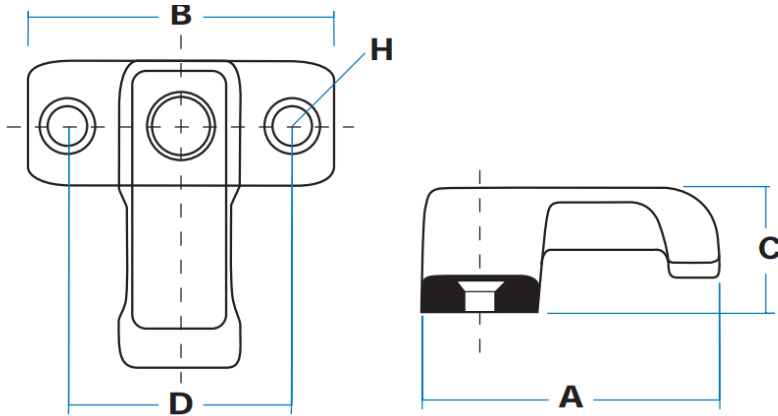
Features

- A clever little catch, used for holding hatches and panels in either open or closed positions
- A concealed spring and 'detente' holds the arm securely in position
- Suitable for both inside or external fitting



Material

- Die cast, black powder coated



Part No.	A	B	C	D	H
GD26-G01936	47	48	19	35	c/s 4 mm